



NEWSLETTER

Issue 2

About the project

SWARM-E is a transdisciplinary approach for sustainable, affordable and modern energy access and wellbeing for Sub-Saharan Africa, aligned with the AU-EU Agenda 2063. The Project receives funding from the European Union's Horizon Europe research and innovation programme and is coordinated by MICROENERGY INTERNATIONAL GMBH (MEI). SWARM-E consists of 16 organisations, including partners from Europe (Germany, Spain, Bulgaria, Belgium, Ireland and Italy), African countries (Rwanda, Tanzania and Kenya) and Asia (Bangladesh).



First
decentralized
and **green H₂**
production



First
renewable
energy P2P
grid



First
interconnection
of **decentralized**
RE systems



Sustainable and
inclusive
productive uses
of electricity

SWARM-E project Marks Its First Anniversary!

In **April 2025**, the SWARM-E project proudly celebrated its first anniversary — a year marked by connection, exploration, and laying strong foundations for the journey ahead.

Over the past 12 months, the consortium has grown together, becoming familiar with the local context, learning from communities on the ground, and setting the stage for the full implementation of the project's objectives.

It has been a truly productive and inspiring year. **Key studies and deliverables** have been published, and the project held its **first in-person Consortium meeting in Kigali**. **Two exploratory events** also took place — one in **Rwanda** and one in **Tanzania** — helping to deepen engagement and understanding in the region. While several important milestones have already been achieved — some even ahead of schedule — the majority of the work and impact still lies ahead.

As we mark this first year, we extend our **heartfelt congratulations** to all members of the **SWARM-E Consortium and stakeholders**.

Here's to continued collaboration, progress, and impact in the years to come!



Latest news

Paving the Way for Inclusive Energy Access: SWARM-E Holds Second Exploratory Workshop in Tanzania

On **May 27th, 2025**, the **2nd SWARM-E Project Exploratory Workshop** was held at the **Crowne Plaza Hotel** in **Dar es Salaam**, marking a pivotal moment in Tanzania's journey toward inclusive, decentralized, and sustainable energy systems.

Organized by **TAREA TZ** as part of **Renewable Energy Week 2025**, the event brought together a dynamic and diverse group of stakeholders — from policymakers and engineers to NGOs, community representatives, and private sector actors — all united by a shared goal: transforming energy access for remote and underserved communities, such as those on **Kwale Island**. [Read More...](#)



Regulation, Risk & Market Access

At the heart of the workshop was a high-level panel discussion featuring:

- Eng. **Victor Labaa** – Electricity and Water Regulatory Authority (EWURA)
- Eng. **Joyce Msangi** – Ministry of Energy
- Eng. **Samwel Kessy** – Tanzania Electricity Supply Company (TANESCO)
- Eng. **Kombe** – Rural Energy Agency (REA)

These key public sector leaders tackled the regulatory, technical, and implementation challenges hindering off-grid electrification, while outlining collaborative strategies to unlock innovation in mini-grids, productive use of energy (PUE), and e-mobility across Tanzania.



Partner Contributions and Expert Insights

We extend our sincere thanks to the project partners whose contributions were essential to the workshop's success: **Matthew Mattimbwi (TAREA)** skillfully moderated the panel and delivered both opening and closing remarks; **Adrian Mapunda (Elico Foundation)** presented the SWARM-E technology and its relevance for the Tanzanian energy context; **Shadrak Omwenga (MEI)** and **Luca Traini (RES4Africa)** led engaging discussions on productive uses of energy and capacity building; **Frederick Mushi (Ekoglobe)** offered valuable perspectives on local-level implementation and practical applications.

Their expertise and commitment played a key role in shaping a constructive and forward-looking dialogue.



Focus Group Discussions

Community Engagement Activities in Rwanda and Tanzania

In the recent months, the SWARM-E project held several focus group discussions (FGDs) across Rwanda and Tanzania to better understand community needs and priorities around energy access. These sessions provided valuable insights into everyday challenges and opportunities, while also testing participatory methods to explore household preferences for future electricity use.

The discussions in Rwanda highlighted issues such as water purification, transportation, clean cooking and productive uses of energy through agricultural and commercial appliances. In addition to the FGDs, field visits and informal interviews enriched the understanding of local contexts, from household needs to market dynamics.

On the Tanzanian islands of Kwale and Koma, the focus shifted toward topics closely tied to island life, such as desalination, fishing, seaweed processing, and women-led activities. The participatory approach revealed strong interest in solutions that can support livelihoods and community development.

A key method tested during these activities was a questionnaire, which helped participants discuss and rank appliances they would like to use in the future. The exercise showed that interests vary across sites, and that women-only groups often expressed different priorities than mixed groups—highlighting the importance of inclusive participation.

Alongside this, household workshops using systems-based methodologies were piloted to map out the factors influencing decisions around electricity access. This approach allowed communities to express both the enablers and barriers to obtaining and sharing electricity, providing the project with deeper insights into local dynamics.

These engagement activities demonstrate the value of participatory approaches in shaping energy solutions that are not only technically feasible but also socially relevant and aligned with the aspirations of local communities.



Synergies & WEFE Cluster

Partner Spotlight: Inkomoko, Rwanda and Refugee-Led Entrepreneurship

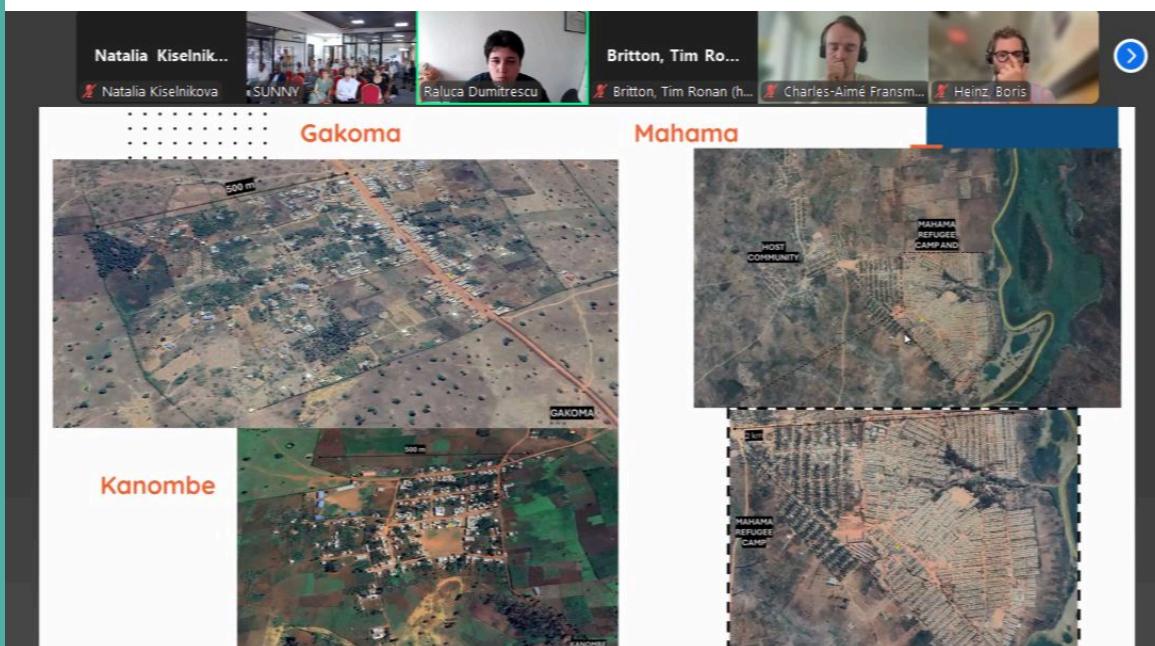
On **June 25th**, as part of the **SUNNY Project activities in Rwanda**, **SWARM-E** partner visited **Mahama Refugee Camp in Kirehe District** for a day of technical workshops and field engagement. A key contribution came from **Inkomoko Rwanda**, a core **SWARM-E** partner focused on community engagement and capacity building. Through entrepreneurship training, technical workshops, and mentoring, Inkomoko supports local leaders and refugee-led businesses, ensuring that SWARM-E energy systems are not only implemented but also sustained, owned, and operated by the communities they serve. During the workshop, **Helle Dahl Rasmussen**, Inkomoko's Business Manager, shared valuable insights into their work on the ground. The visit also included briefings from **UNHCR** and **MINEMA**, tours of energy and water infrastructure, and exchanges with local partners such as Solektra Rwanda Ltd.e.

[Read More](#)



SWARM-E Presented at SUNNY Project Consortium in Rwanda

On **June 16th**, **Raluca Dumitrescu** of **MicroEnergy International** presented the **SWARM-E** Project during the consortium meeting of the **SUNNY Project in Kigali**. The session offered a platform to highlight **SWARM-E's** objectives—fostering sustainable, affordable, and modern energy access in Rwanda and Tanzania—and sparked a lively discussion with stakeholders on the country's energy and development challenges. The **SUNNY Project** meetings, hosted by the **University of Rwanda**, brought together key institutions including the **Ministry of Infrastructure**, **Rwanda Environment Management Authority (REMA)**, **Rwanda Energy Group**, and the **EU Delegation to Rwanda**. Participants also exchanged insights with representatives from other initiatives, including the **HEED Project (Coventry University)**, which focuses on energy solutions in refugee settings. In the following days, partners travelled to **Kirehe District** to review project progress and visit the Mahama Refugee Camp, where many of these interventions are being implemented on the ground. [Read More](#)



WEFE Cluster

The SWARM-E Project is actively contributing to the **WEFE Cluster**, a group of **eight Horizon-funded** initiatives focused on the **Water-Energy-Food-Ecosystems nexus**. Through regular exchanges with other projects, SWARM-E helps share technical and social insights, strengthen synergies, and support joint outreach and policy efforts. These collaborative activities aim to broaden impact, engage diverse stakeholders, and promote sustainable, cross-sector solutions.



Meet our Partners

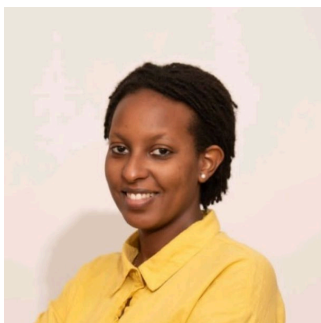


Meet Adeline Icyimpaye, Project Partner

Adeline represents **OffGridBox**, a pioneer in **off-grid energy and water solutions**. Within the SWARM-E project, she and her team are interconnecting **decentralized infrastructures in Tanzania** and deploying **containerized solar-water systems in Rwanda**. Their technology provides clean water, solar pumping, and powers equipment like cold storage, welding, carpentry, and biodigesters — all in support of **resilient, off-grid communities**.

Watch the interview with Adeline:

[Video Interview](#)



Meet Rachel Akimana, Project Partner

Rachel represents **Inkomoko Rwanda**, a key **SWARM-E** partner focused on **community engagement and capacity building**. Within the project, she and her team deliver entrepreneurship training, technical workshops, and mentoring to help local leaders and businesses thrive. Their work ensures the SWARM-E grids are not just implemented, but **sustained, owned, and operated by the communities** they're designed to serve.

[Video Interview](#)[Download the brochure](#)

Partners

[VISIT OUR WEBSITE](#)

FOLLOW SWARM-E ON SOCIAL MEDIA





Co-funded by
the European Union

Co-funded by the European Union, project number 101146291. Views and opinions expressed within the current document are however those of the author(s) only and do not necessarily reflect those of the European Union or the European Climate, Infrastructure and Environment Executive Agency (CINEA). Neither the European Union nor CINEA can be held responsible for them.

Copyright (C) 2024 SWARM-E All rights reserved.

Our mailing address is

Want to change how you receive these emails?

You can [update your preferences](#) or [unsubscribe](#)

